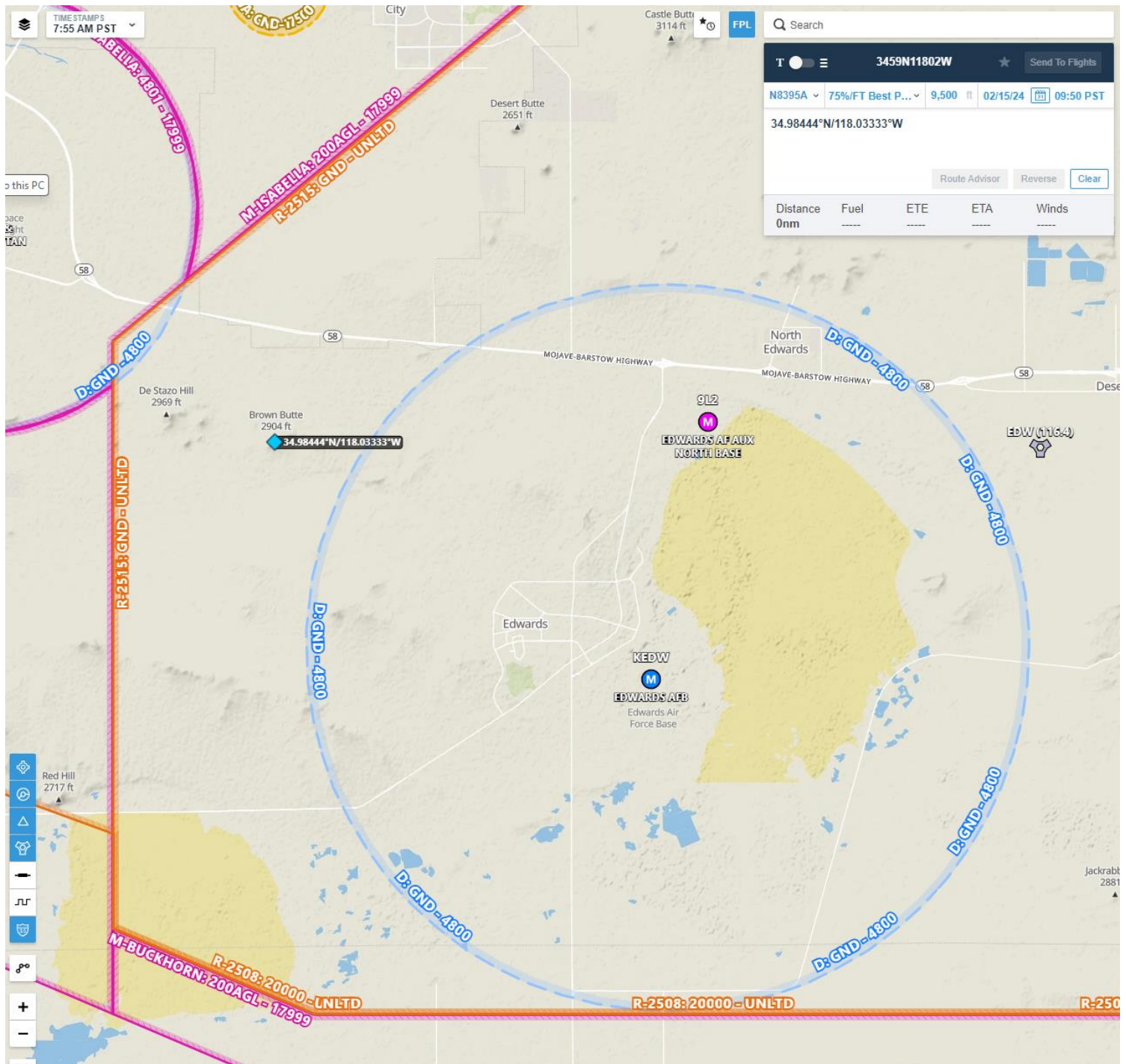


Brown Butte Departure Procedures

- Dept the Class D at or below 3,300' MSL direct to **Brown Butte**
- Clear of Class D climb is approved to at or below 4,500' MSL (SPORT Restriction)
- SPORT can approve a climb, just ask.
- Leaving R2515, VFR Climb Approved
- Remain clear of MHV Class Delta

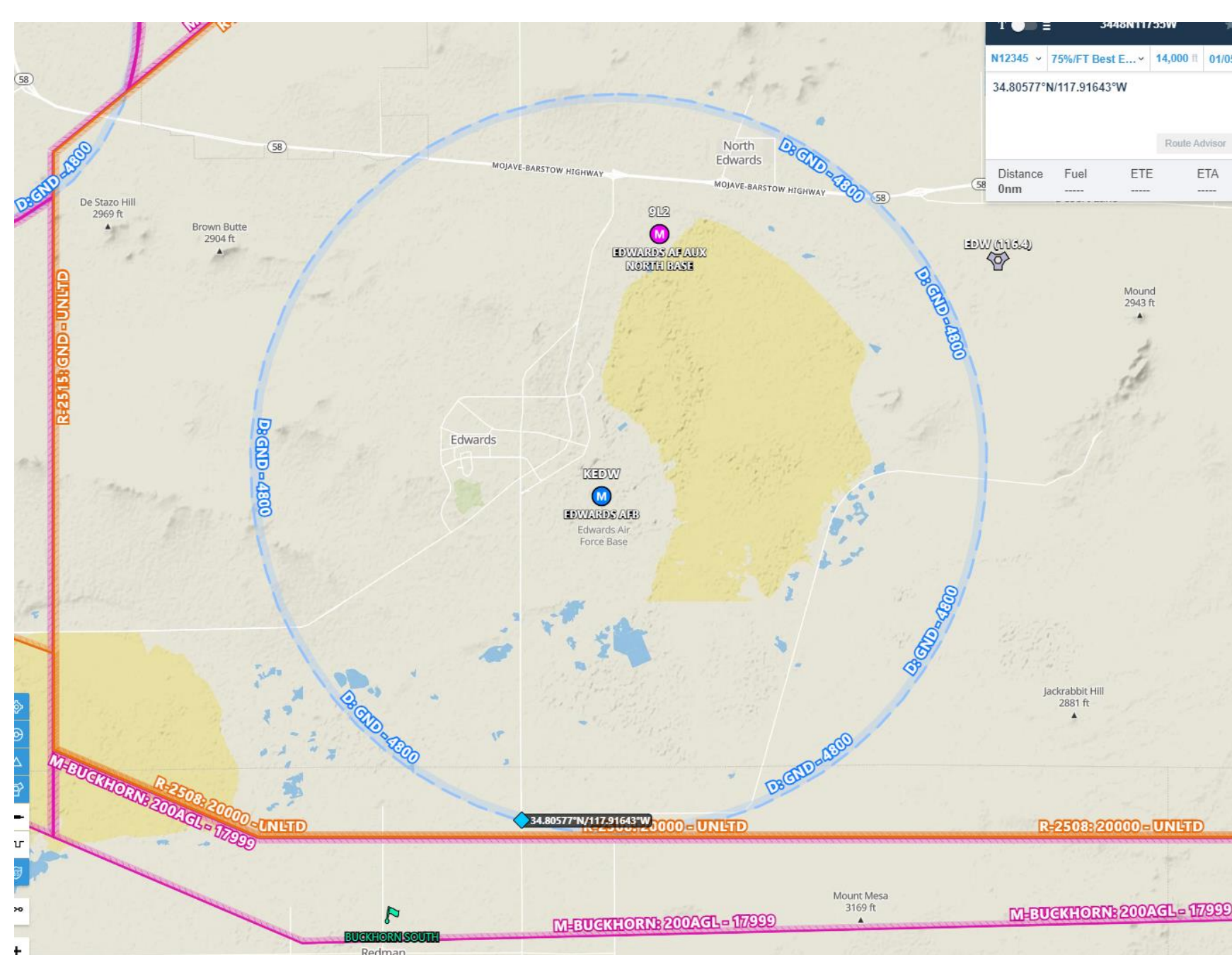


Brown Butte Arrival Procedures

- Enter R2515 with a clearance, at or below 4,500' MSL direct **Brown Butte**
- Enter the Class D at or below 3,300' MSL once approved in
- Tower will issue arrival instructions
- Holding will be over Brown Butte 3,300' MSL if required
- Remain clear of MHV Class Delta

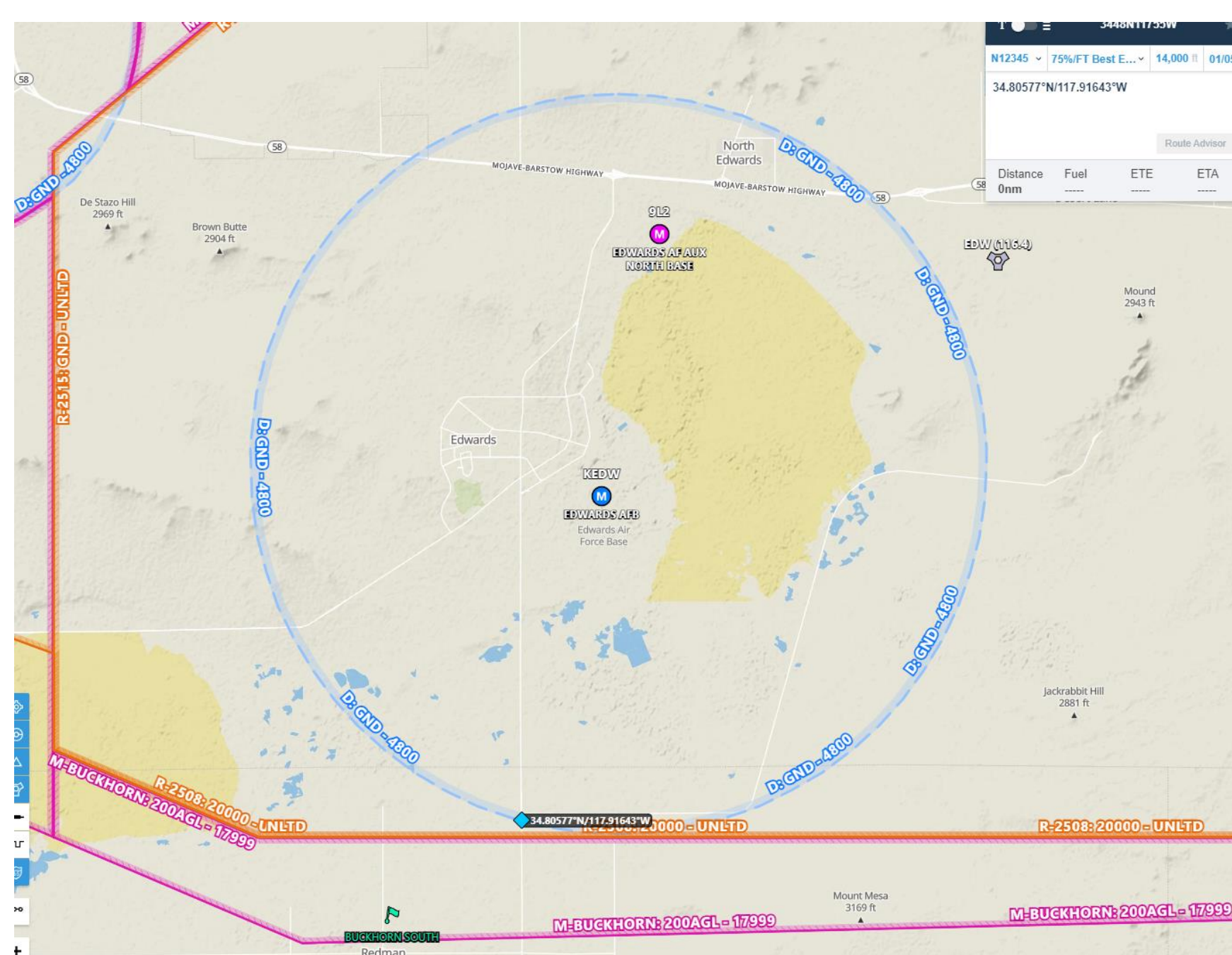
South Gate Departure Procedures

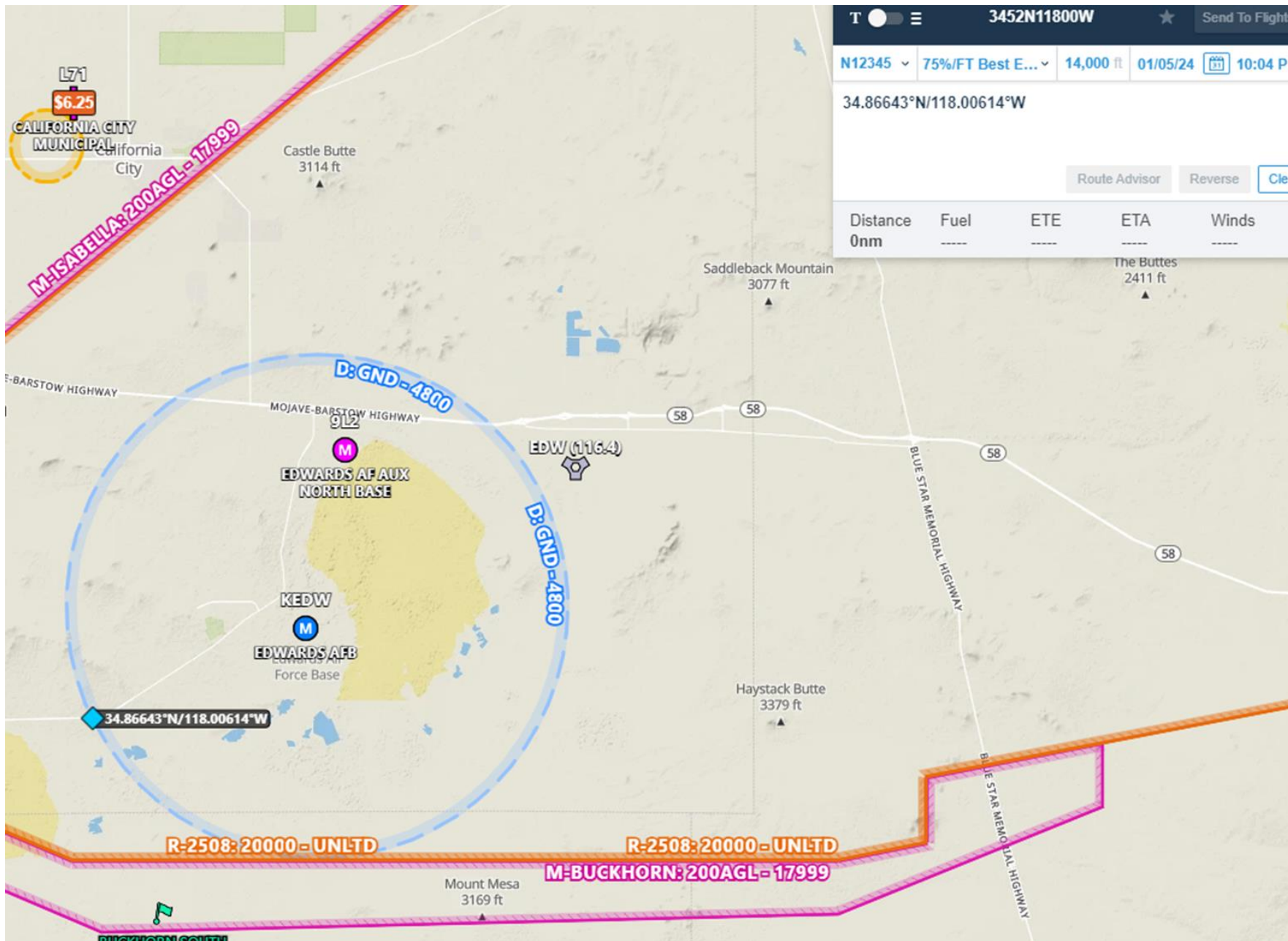
- Dept the Class D at or below 3,300' MSL direct to South Gate
- Clear of Class D VFR climb is approved in the Buckhorn MOA



South Gate Arrival Procedures

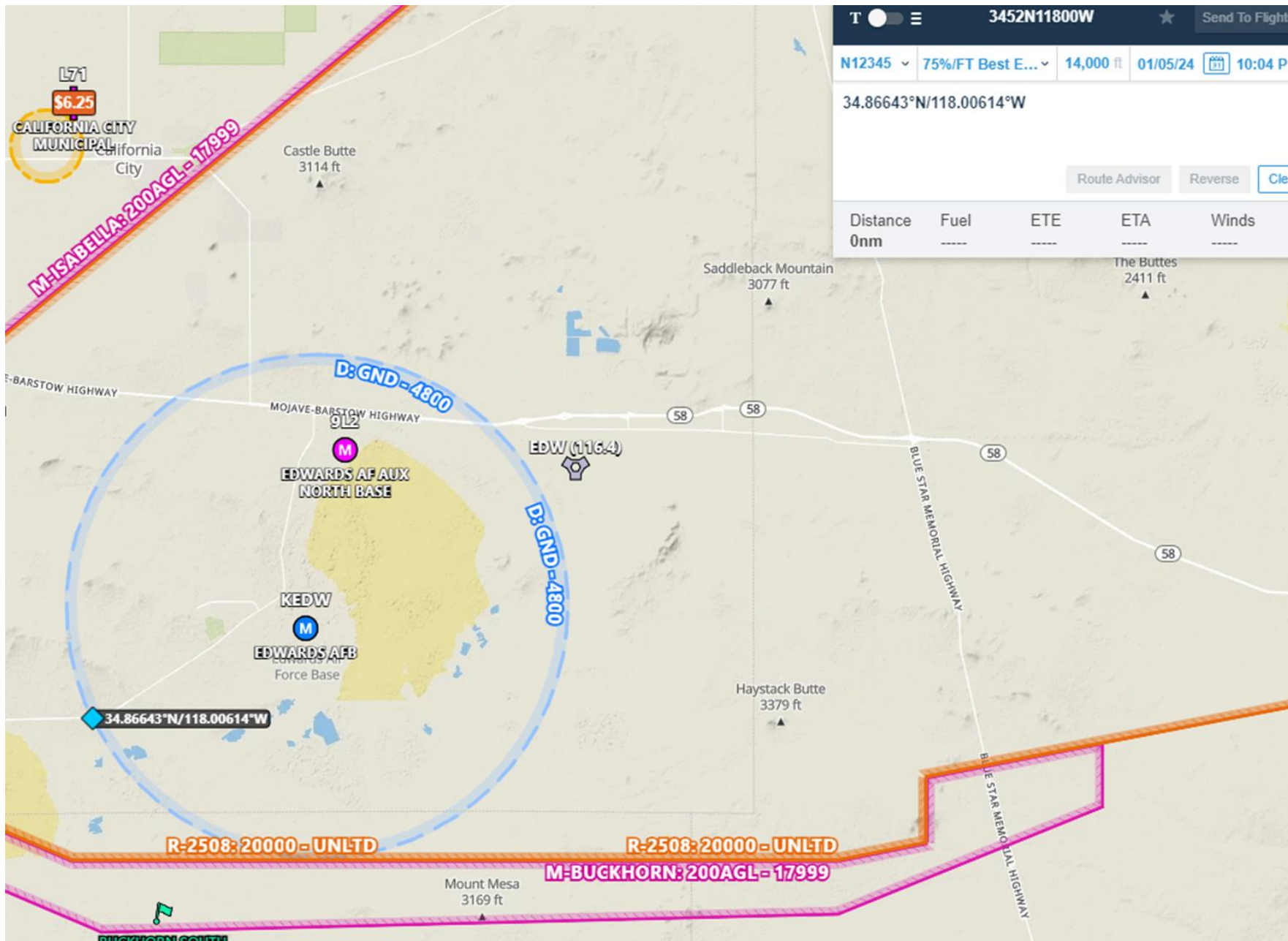
- Enter R2515 with a clearance, at or below 3,300' MSL direct **South Gate**
- Enter the Class D at or below 3,300' MSL once approved in
- Tower will issue arrival information
- Holding will be over South Gate or South Lakebed at 3,300' MSL if required





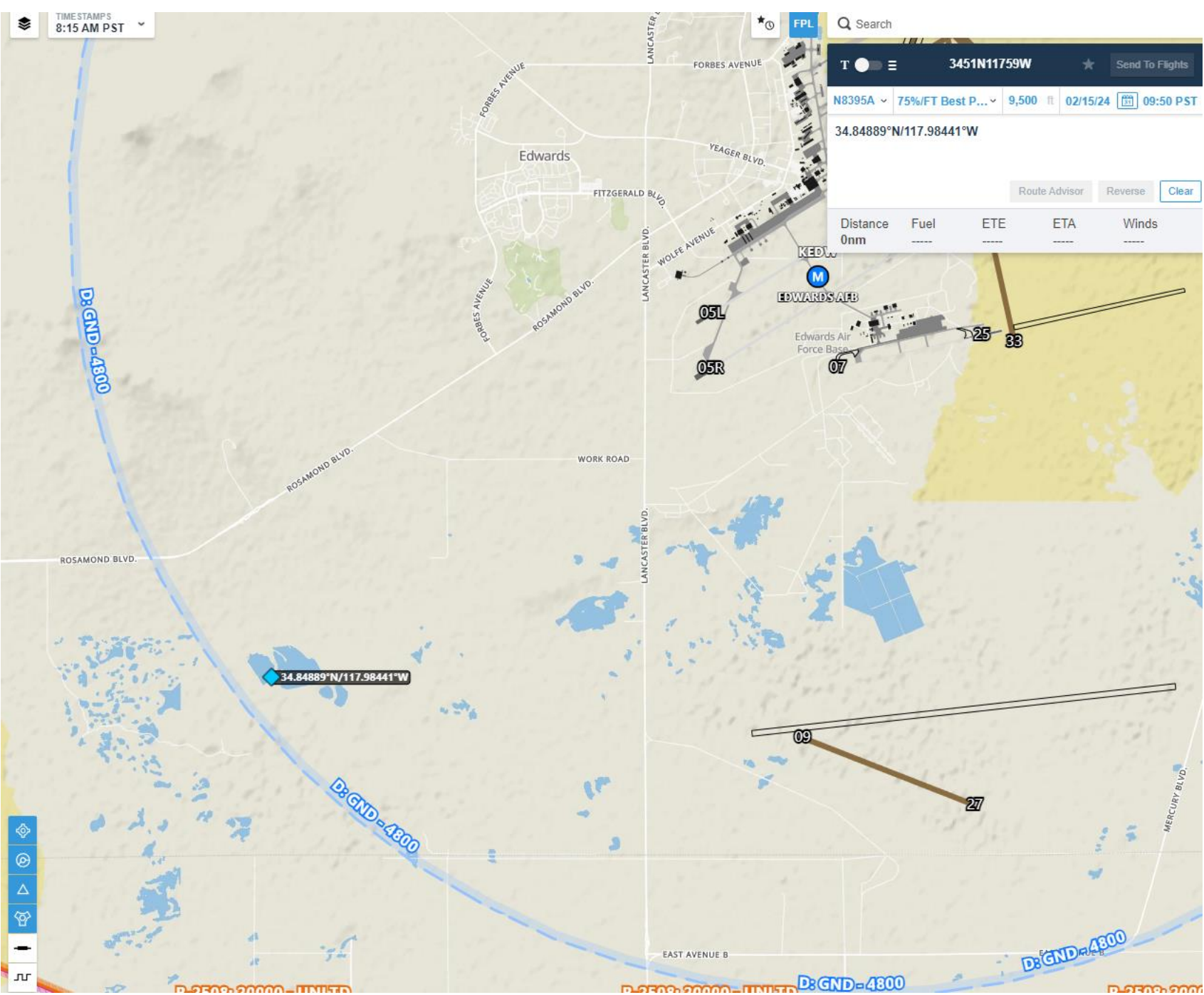
West Gate Departure Procedures

- Dept the Class D at or below 3,300' MSL direct to **Bend in the Road**
- Remain at or below 3,300' MSL until clear of R2515
- SPORT can approve a climb, just ask.
- Leaving R2515, VFR Climb Approved



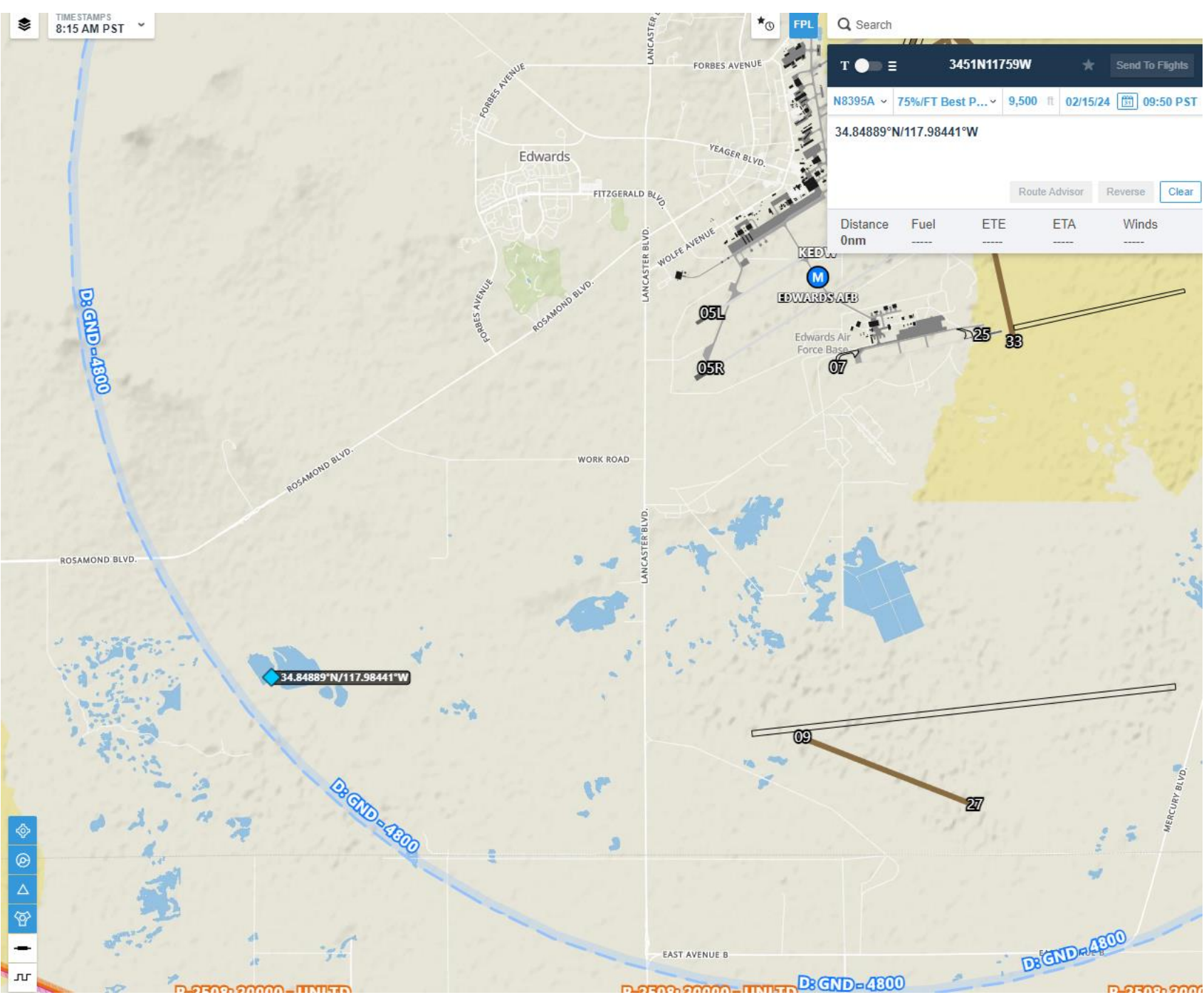
West Gate Arrival Procedures

- Enter R2515 at or below 3,300' MSL direct to **Bend in the Road**
- Tower will issue arrival instructions
- Expect holding north side of Bend in the Road



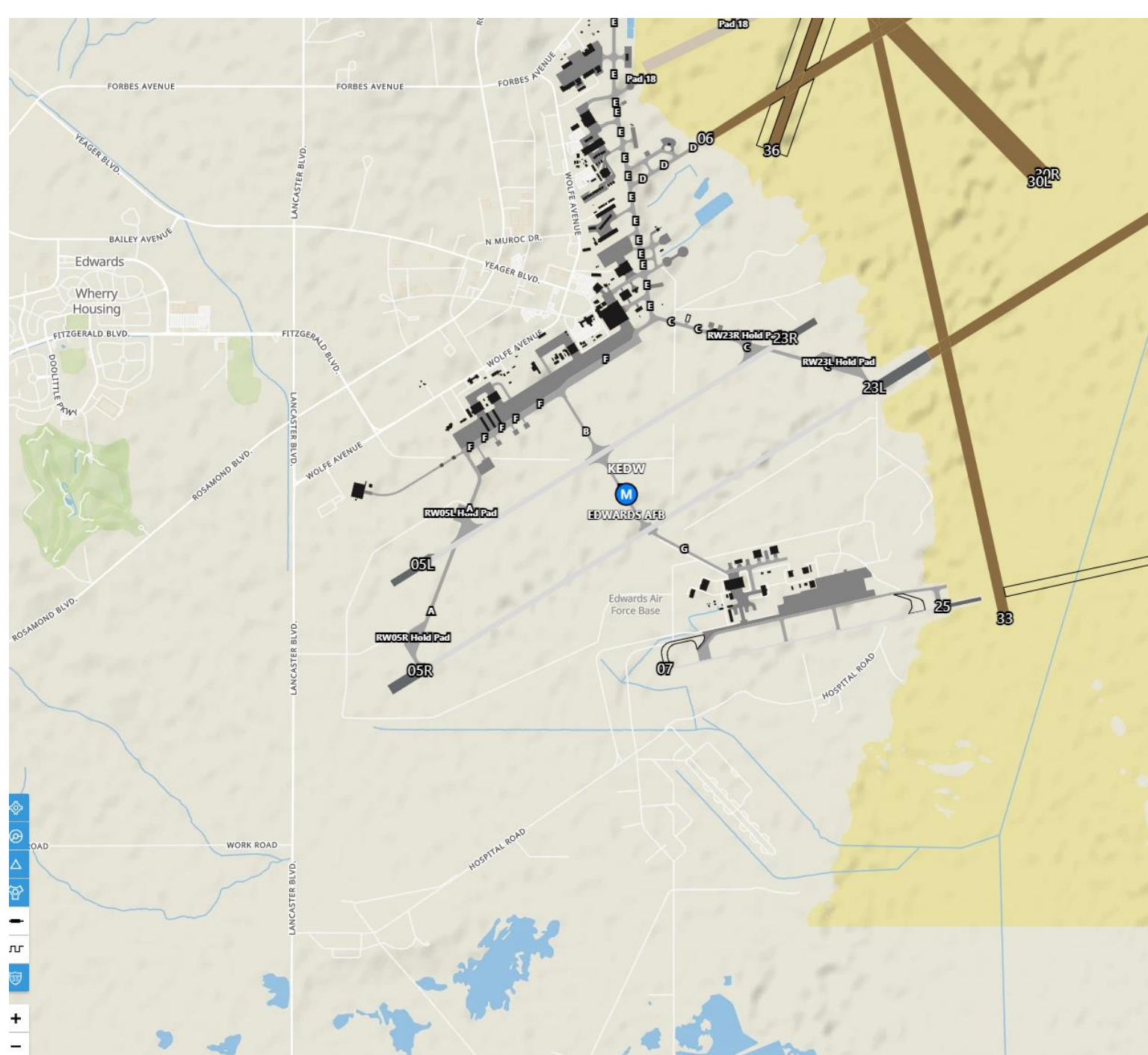
Buckhorn Departure

- Dept the Class D at or below 3,300' MSL direct to **Buckhorn**
- Remain at or below 3,300' MSL until clear of R2515
- SPORT can approve a climb, just ask.
- Leaving R2515, VFR Climb Approved
- Little to No traffic at EDW / otherwise tower will issue West Gate departure



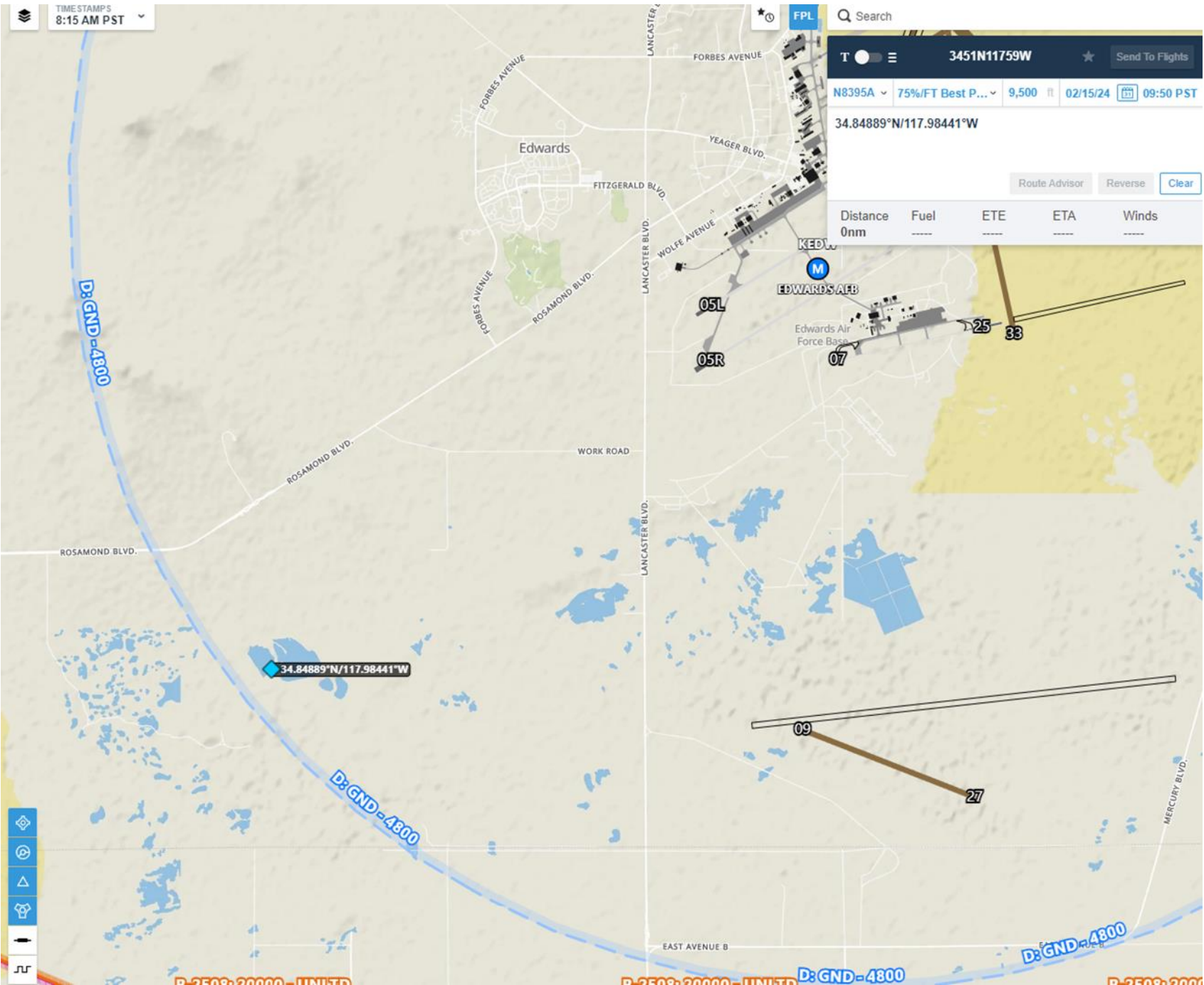
Buckhorn Arrival

- Enter R2515 at or below 3,300' MSL direct to **Buckhorn**
- Tower will issue arrival instructions
- Hold over buckhorn at or below 3,300' MSL
- Little to No traffic at EDW



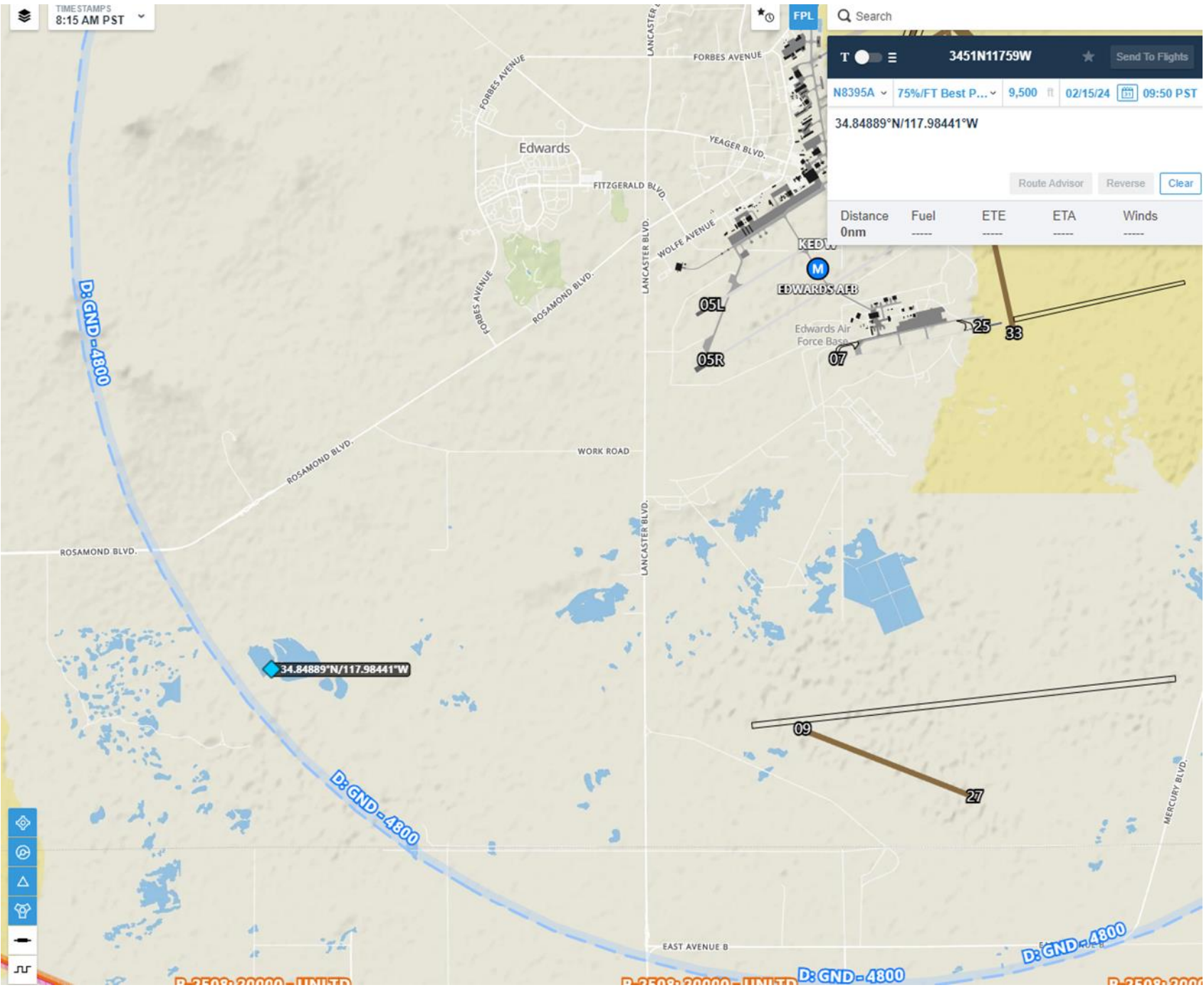
Departure Info

- If you have a Pancho 3 Barstow Airspace Clearance, you depart per EAFBI 13-204
- All GA/Aero Club aircraft departures will be given approvals for a fix to depart the area
- Listen for that approval, It will be issued with takeoff clearance or after airborne if tower is deconflicting traffic
- Depart straight out until given an exit fix



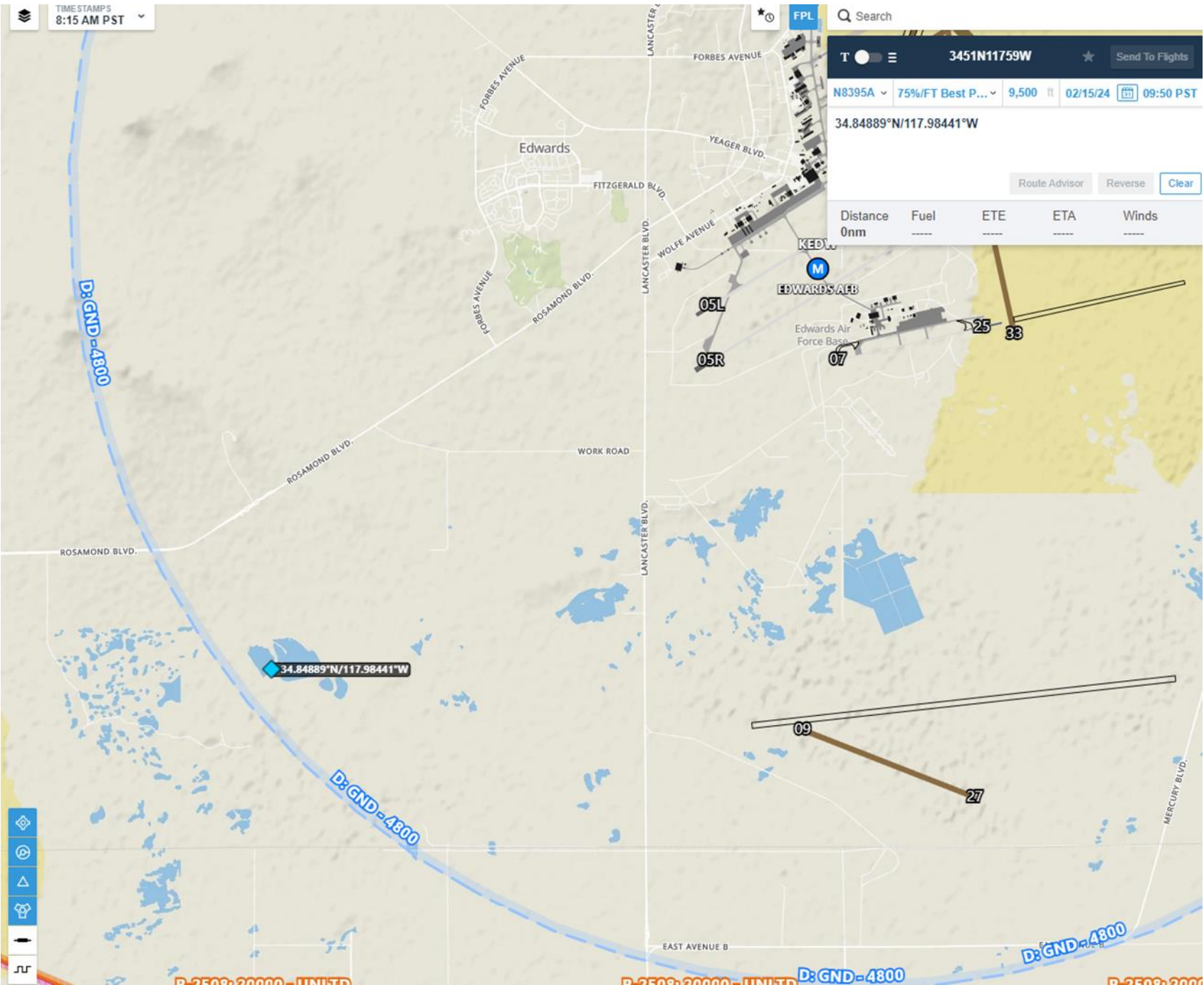
Arrival Info

- All airspace rules apply
- R2515 require a clearance to enter from the controlling agency that is Joshua or SPORT
- R2515 is always active 5,000' MSL and now recently 12,000' and below
- Class Delta requires two-way radio comms to enter, otherwise hold that the entry fix



Arrival Technique

- If you need fuel at South Base and your inbound from the SW use Buckhorn
- If you are inbound from the SW and are landing main base use Westgate
- This technique will move you to the correct side of the departure/arrival corridors



CTAF Arr/Dept Info

- During Unmanned Airfield Operations (TOWER CLSD) use CTAF 120.7
- AIM/SOP/PHAK/EAFBI 13-204, TW UAO Policy will require normal CTAF operation, no more arrival routes
- Use a fix and make the CTAF calls
- There will be more aircraft than you are aware of operating at main base soon

Tower Liaison / Tours

Call me, Email me, Stop by say hello!

Scott Crawford

Airfield Operations Flight, Director of Operations (AOF/DO)

661-277-7953

scott.crawford.7@us.af.mil