

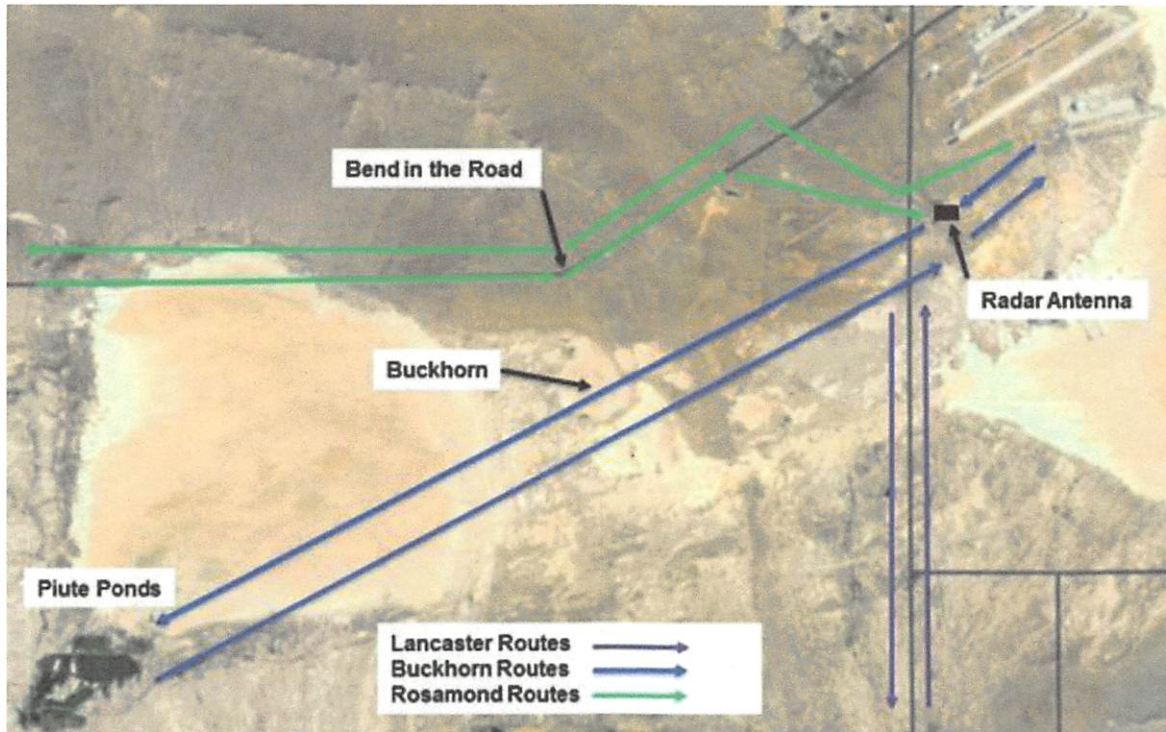
Table 4.4. South Base Departures.

Departure	Altitude (ft MSL)	Procedures
Buckhorn	2,800'	Departures from either Main or South Base will fly over the radar antenna, then proceed outbound overflying Buckhorn. Contact SPORT over Buckhorn.
Lancaster	2,800'	Departures will fly over the radar antenna to proceed outbound within 1/4 NM west of Lancaster Blvd until Avenue E (last major east/west surface street). Contact SPORT/Joshua over the Sled Tracks or when directed by Tower.
Rosamond	2,800' 3,300'	Depart at 235 heading at 2,800' MSL. Crossing Lancaster Blvd, turn right heading 275 to intercept Rosamond Blvd, then maintain 1/4 NM north of Rosamond Blvd. Contact SPORT abeam golf course. At bend-in-the-road, climb to 3,300' MSL to be level by the east shoreline of Rosamond Dry Lakebed. Be alert for model airplanes North sUAS Area of on Rosamond Dry Lakebed.

Table 4.5. South Base Arrivals.

Departure	Altitude (ft MSL)	Procedures
Buckhorn	3,300' 2,800'	Contact SPORT/JOSHUA 1 NM west of Piute Ponds at 3,300' MSL. When cleared by SPORT/JOSHUA, proceed inbound and contact Tower or switch to CTAF. Fly southeast of Buckhorn at 2,800' MSL toward south of the radar antenna, then transition to applicable runway pattern.
Lancaster	2,800'	Remain south of Avenue E (last major east/west surface street prior to turning northbound on 120th St) until cleared by SPORT, JOSHUA or Tower. When cleared, proceed north paralleling Lancaster Blvd 1/4 NM to the east. Contact Tower or CTAF when instructed or when passing the Sled Tracks. Abeam the radar antenna, transition to applicable runway pattern.
Rosamond	3,300' 2,800'	Contact SPORT/JOSHUA 1 NM east of Rosamond. When cleared by SPORT/JOSHUA, proceed inbound (east) directly over Rosamond Blvd. Maintain 3,300' MSL until past the east shore of Rosamond Dry Lakebed, then descend to 2,800' MSL by bend-in-the-road. Be alert for Buckhorn arrivals/departures. Contact Tower or CTAF at the bend-in-the-road and continue to track directly over Rosamond Blvd until 1/2 mile east of the Rod and Gun Club/Small Arms Range. After passing Small Arms Range, turn right heading 095 to the radar antenna for transition to applicable runway pattern, maintaining 2,800' MSL.

Figure 4.2. Light Aircraft Arrivals South Base.



4.6.4.1. South Base Restrictions.

4.6.4.1.1. Buckhorn routes are preferred over Rosamond routes when Tower is open.

4.6.4.1.2. If the Alpha Corridor is active, expect Rosamond routes instead of Buckhorn routes.

4.6.4.1.3. Tower approval (when open) is required prior to crossing Rwy 05/23 extended centerline. Cross at least 3 NM from the approach end of Rwy 05, at or below 500' AGL.

4.6.4.2. Departure Procedures. Contact Ground when ready to taxi. Contact Tower prior to entering the runway. Pilots will be instructed to report airborne (takeoff clearance will not be issued) and will be afforded traffic advisories. Tower transmits Main Base wind, respective North/South Base runway in use, altimeter, known traffic, and issues reporting points (when required). Tower (when open) provides advisory services only. The runway environment is not visible from the Tower therefore crews are responsible for providing separation from other aircraft.